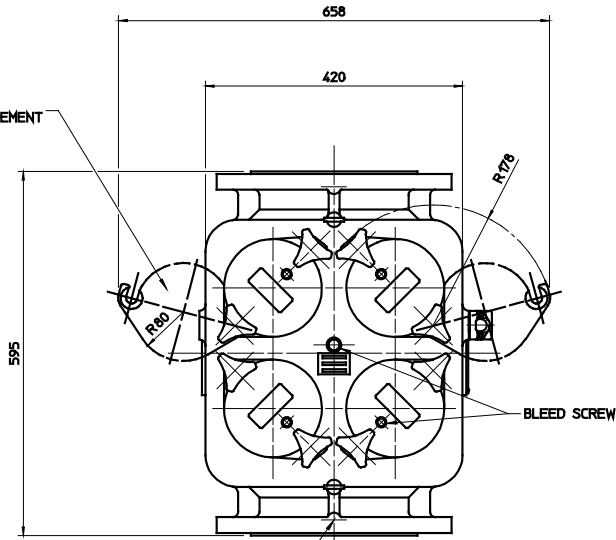


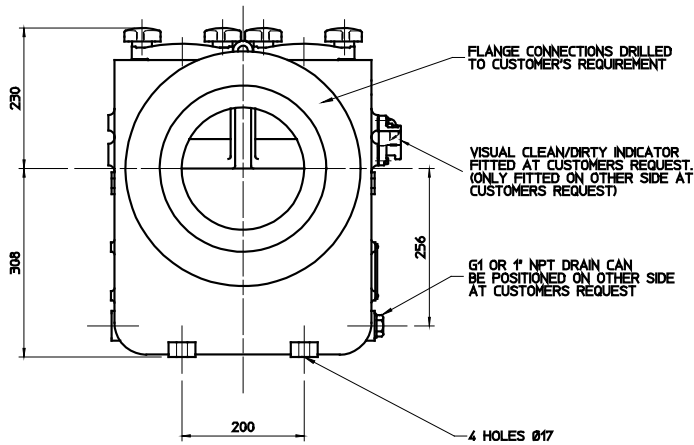
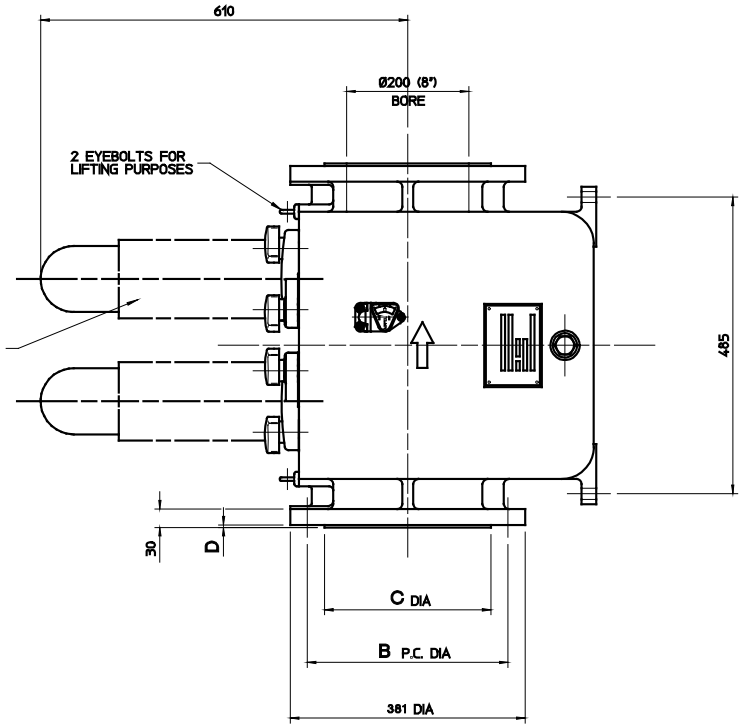
PROJECTION

SPACE REQUIRED TO WITHDRAW FILTER ELEMENT



BOSSES ON INLET AND OUTLET FLANGES FOR G1/4 OR 1/4" NPT PRESSURE CONNECTIONS (ONLY DRILLED ON SPECIAL REQUEST)

SPACE REQUIRED TO WITHDRAW FILTER ELEMENT



FLANGE TYPE	Non-Standard Flange Order	B	C	D	No. OF HOLES	DIA OF HOLES	INLET BOSS		OUTLET BOSS	
							TAPPED	TAPPED		
FLANGE DETAILS										

WEIGHT OF FILTER - 260kg (572lb) [CAST IRON]  
 TOTAL ELEMENT SURFACE AREA - STANDARD ELEMENT 3560cm (552in<sup>2</sup>)  
 MAX WORKING PRESSURE - 13.8 bar (200lb/in<sup>2</sup>)  
 (Subject To Flange Limitation)  
 TEST PRESSURE - 27.5 bar (400lb/in<sup>2</sup>)

19/7/96	4	RE DRAWN (ME 10)	UNLESS SPECIFIED OTHERWISE TOLERANCES = 0 DEC. PLACE METRIC & 1/16" 1 DEC. PLACE METRIC & 6/32" 2 DEC. PLACE METRIC & 0.001" ANGULAR DIMENSIONS & 30°	APPROVED	MATERIAL	Radco Strainers, Inc. Charlotte, NC						
03/11/95	3	COVER NUTS ADDED		CHECKED	FURNISH							
26/01/90	2	1400 ACROSS FLANGE DIM 595 WAS 570				GENERAL ARRANGEMENT						
10/11/89	1	BLEED SCREW ADDED TO BODY WT. WAS 2750g	SPECIAL NOTES:- 1. Remove All Burrs & Sharp Edges. 2. Unless Otherwise Specified, All Dimensions Are in Millimeters. 3. Do Not scale. 4. If In Doubt, Ask.	DRAWN	ORIGINAL SCALE 1/4 FULL SIZE							
DATE	No.	M/R No.	MODIFICATION	DATE	REF.	200mm(8")OV Flg						
				23/03/89								
<table border="1"> <tr> <td>SIZE</td> <td>DWG. No.</td> <td>ISS</td> </tr> <tr> <td>C</td> <td>15062</td> <td>4</td> </tr> </table>						SIZE	DWG. No.	ISS	C	15062	4	
SIZE	DWG. No.	ISS										
C	15062	4										